

## 16.2 - RACCORDI VARI PER MONTAGGIO 16.2 - DIFFERENT FITTINGS

TIPO/TYPE  
VF



TIPO/TYPE  
NDO



TIPO/TYPE  
ND

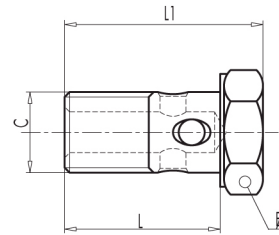


TIPO/TYPE  
NDG



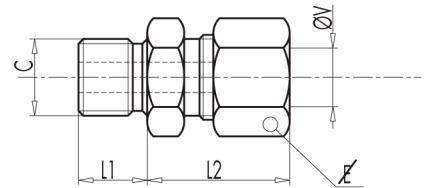
### VITE FORATA - HOLED SCREW

CODICE CODE	SIGLA TYPE	COPPIA DI SERRAGGIO CLOSING COUPLE	C	L	L1	E	PESO WEIGHT
		Nm	GAS-MET	mm	mm	mm	Kg
<b>R1350</b>	VF 1/4"	55	G 1/4"	28	34	19	0,04
<b>R1360</b>	VF 3/8"	70	G 3/8"	31	39	22	0,05
<b>R1370</b>	VF 1/2"	85	G 1/2"	38	46	27	0,08
<b>R1390</b>	VF 14	60	M14x1,5	27	33,5	19	0,03
<b>R1380</b>	VF 18	75	M18x1,5	36	44	24	0,06



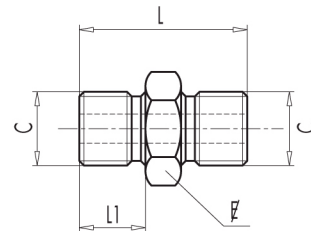
### NIPPO CON DADO E OGIVA - NIPPLE WITH NUT AND OLIVE

CODICE CODE	SIGLA TYPE	C	ØV	L1	L2	E	PESO WEIGHT
		GAS	mm	mm	mm	mm	Kg
<b>R1120</b>	NDO 1/4" x 12L	G 1/4"	12	11	28	22	0,06
<b>R1110</b>	NDO 3/8" x 12L	G 3/8"	12	13	28	22	0,06
<b>R1130</b>	NDO 1/2" x 12L	G 1/2"	12	13	32	22	0,10
<b>R1140</b>	NDO 1/2" x 15L	G 1/2"	15	13	34	27	0,12



### NIPPO DOPPIO - DOUBLE NIPPLE

CODICE CODE	SIGLA TYPE	C	L	L1	E	PESO WEIGHT
		GAS	mm	mm	mm	Kg
<b>R1125</b>	ND 1/4" x 1/4"	G 1/4"	29	11	19	0,03
<b>R1115</b>	ND 3/8" x 3/8"	G 3/8"	33	13	22	0,05
<b>R1135</b>	ND 1/2" x 1/2"	G 1/2"	38	15	27	0,07



### NIPPO CON DADO A GIRELLO - NIPPLE WITH ROTARY NUT

CODICE CODE	SIGLA TYPE	C - V	L1	L2	E	PESO WEIGHT
		GAS	mm	mm	mm	Kg
<b>R1142</b>	NDG 3/8"	G 3/8"	13	33	22	0,04
<b>R1144</b>	NDG 1/2"	G 1/2"	14	37	27	0,07
<b>R1146</b>	NDG 3/4"	G 3/4"	16	52	32	0,11

